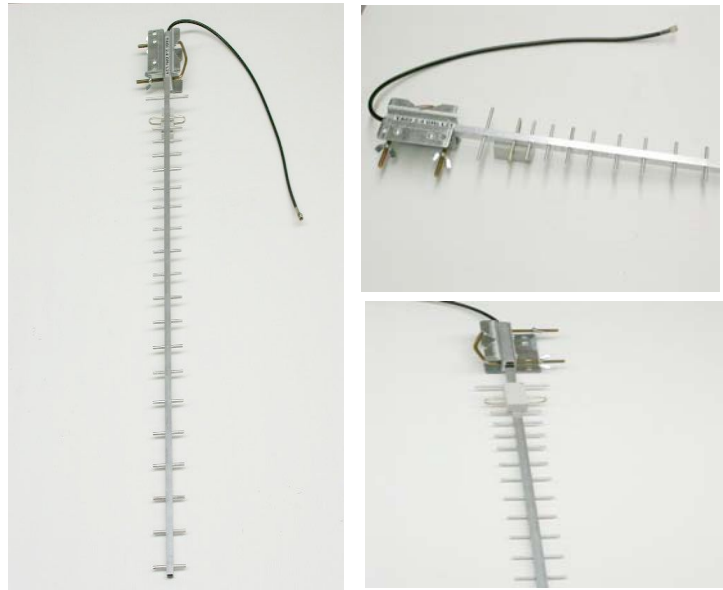
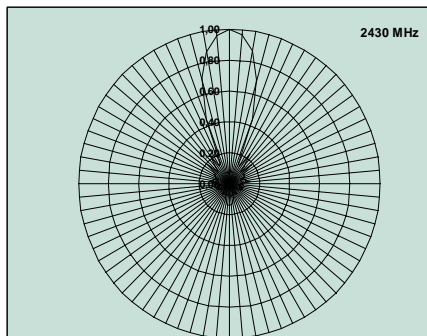


ANTENNA YAGI MTY24L21

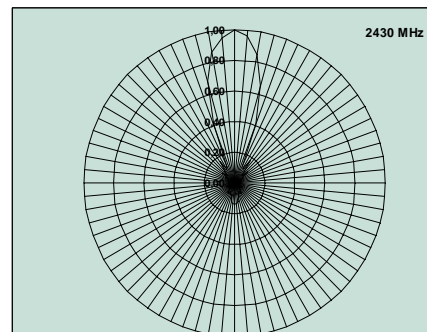
PARAMETRI ELETTRICI		
ANTENNA TIPO	YAGI 2.4 L21	
FREQUENZA [MHz]	2400 ÷ 2500	
IMPEDENZA [Ohm]	50	
CONNETTORE	BNC - N	
GUADAGNO [dBi]	15 ÷ 16	
POLARIZZAZIONE	Orizzontale Verticale	
POTENZA MAX [W]	25	
RETURN LOSS [dB]	> 16	
F/B [dB]	> 18	
<° ORIZZ. [gradi]	30	
<° VERT. [gradi]	30	



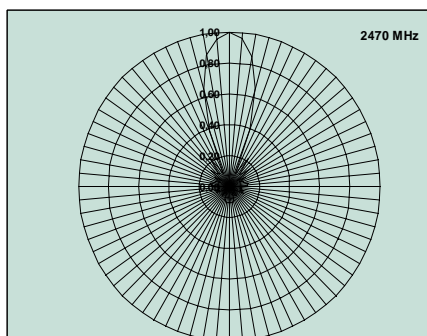
DIAGRAMMI DI IRRADIAZIONE



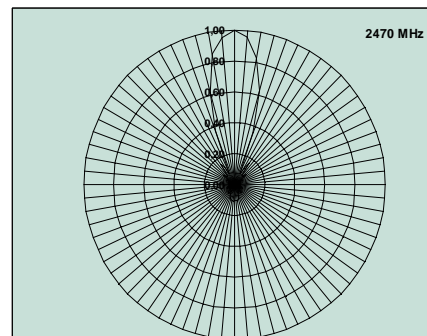
Piano verticale



Piano orizzontale



Piano verticale



Piano orizzontale