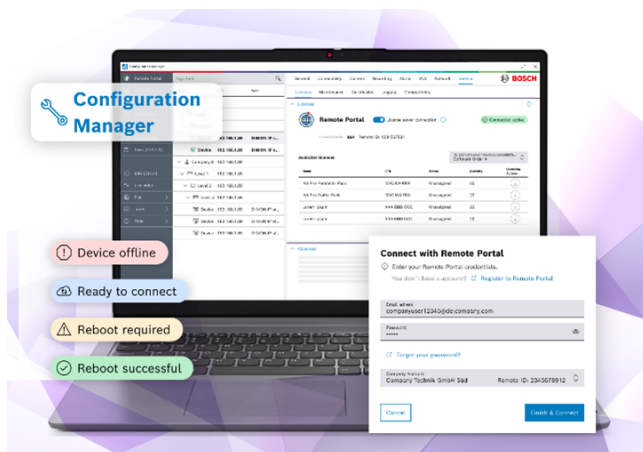


MFT-CM Configuration Manager



Configuration Manager allows you to easily configure Bosch video products and ONVIF devices in your local CCTV network.

You are able to manage a variety of devices, including cameras, decoders, and essential software components such as the Video Recording Manager (VRM) and the Video Streaming Gateway (VSG).

This powerful tool simplifies the setup process, especially when dealing with multiple devices. It includes a bulk configuration feature that allows you to make changes across numerous devices simultaneously.

The interface is flexible, letting you adjust the layout with options for both windowed and table views. It can adapt to different screen sizes and aspect ratios, allowing for customizable navigation menus and window placements. Additionally, the enhanced device tree includes improved filter functions and the clearer icons. The deeply integrated camera view enables you to select multiple cameras at once, even on multi-channel devices.

With Configuration Manager, you can ensure seamless integration and optimal performance across your entire surveillance system.

Functions

Configuration Manager provides the following functions (the availability of these depends on the environment in which the program is used):

- ▶ Free configuration tool for video products and ONVIF devices
- ▶ Compatible with ONVIF Profiles: G, M, S, and T
- ▶ Includes MicroCA for local certificate creation and management
- ▶ Supports local, remote, and bulk configuration
- ▶ User and privileges management with regular updates for cutting-edge performance

Network scan

This function automatically detects all compatible devices present in a local IP based network, such as Bosch video products, including software components, and ONVIF devices.

Device information and configuration

For all your devices in the network, Configuration Manager shows the current configuration for each device and allows you to change the settings.

Bulk configuration

Configuration Manager allows you to select multiple cameras in order to change settings in one batch allowing you to configure large systems in one go.

Video Analytics configuration

Intelligent Video Analytics (IVA) Pro is an expert suite of AI-driven video analytics, which enhances the value of Bosch cameras in various professional applications. The Configuration Manager is the tool of choice to tailor the IVA Pro functionality to your specific needs.

Access to license management

Some value adding features in devices like cameras require a license. With Configuration Manager you can activate, deactivate or check the status of your licenses on a device.

Remote configuration

For your convenience Configuration Manager offers remote configuration of Bosch camera devices. After your devices are registered via Configuration Manager in your Remote Portal account you can manage your devices from remote as you were on-site.

Device system integration

Various import functions, such as the import of CSV or Project Assistant files, make system commissioning, initial setup, and extension a matter of a few clicks. Use the Device allocator function in Configuration Manager to easily assign devices to systems and arrange your device tree.

Find the right camera with screenshot scan

The Screenshot scan function gives an overview of all the cameras that provide video data. The screenshots can be used to identify the camera and device, and give you direct access to said camera or device.

Table view for setting overview and export

The table view provides you with a quick overview of the settings that are of interest to you, and allows to compile specific parameters into custom views. Export this information for archiving with the push of a button.

Device Health Monitor

The device health monitor provides you with a quick overview of the status of selected devices, such as such as the camera load, recording status and type of network connection.

MicroCA

Configuration Manager MicroCA functionality facilitates the certificate management of small to medium systems. It allows for example to roll out certificate based authentication.

Certificate based authentication allows you to create closed systems with very high protection against malicious access. This certification mechanism allows you to set up distributed camera systems that reach security level 3 of FIPS-140-2 standard.

System emulation

The configuration data of Bosch cameras and Configuration Manager can be saved as a system image. The image can be opened using a different Configuration Manager instance and corresponding Bosch cameras thus replicating the actual system. This function helps you to isolate problems without having to access the actual system.

Parts included

Quantity	Component
1	Free of charge software

Technical specifications

Minimum system requirements	
Hardware	Personal Computer
CPU	Dual Core, 3.0 GHz or better
RAM	8 GB or more
OS	Windows Server 2019 Windows Server 2016 Windows 10, 64 bit Windows 11 64 bit
Graphics card	DirectX 11 compatible
Ethernet card	100 Mbps
Sound card	Recommended
Software	Microsoft .NET 4.7.2
Free memory (installation)	400 MB

Ordering information

MFT-CM Configuration Manager
Configuration tool.
Free of charge software download.
Order number **MFT-CM**



<https://www.boschsecurity.com>