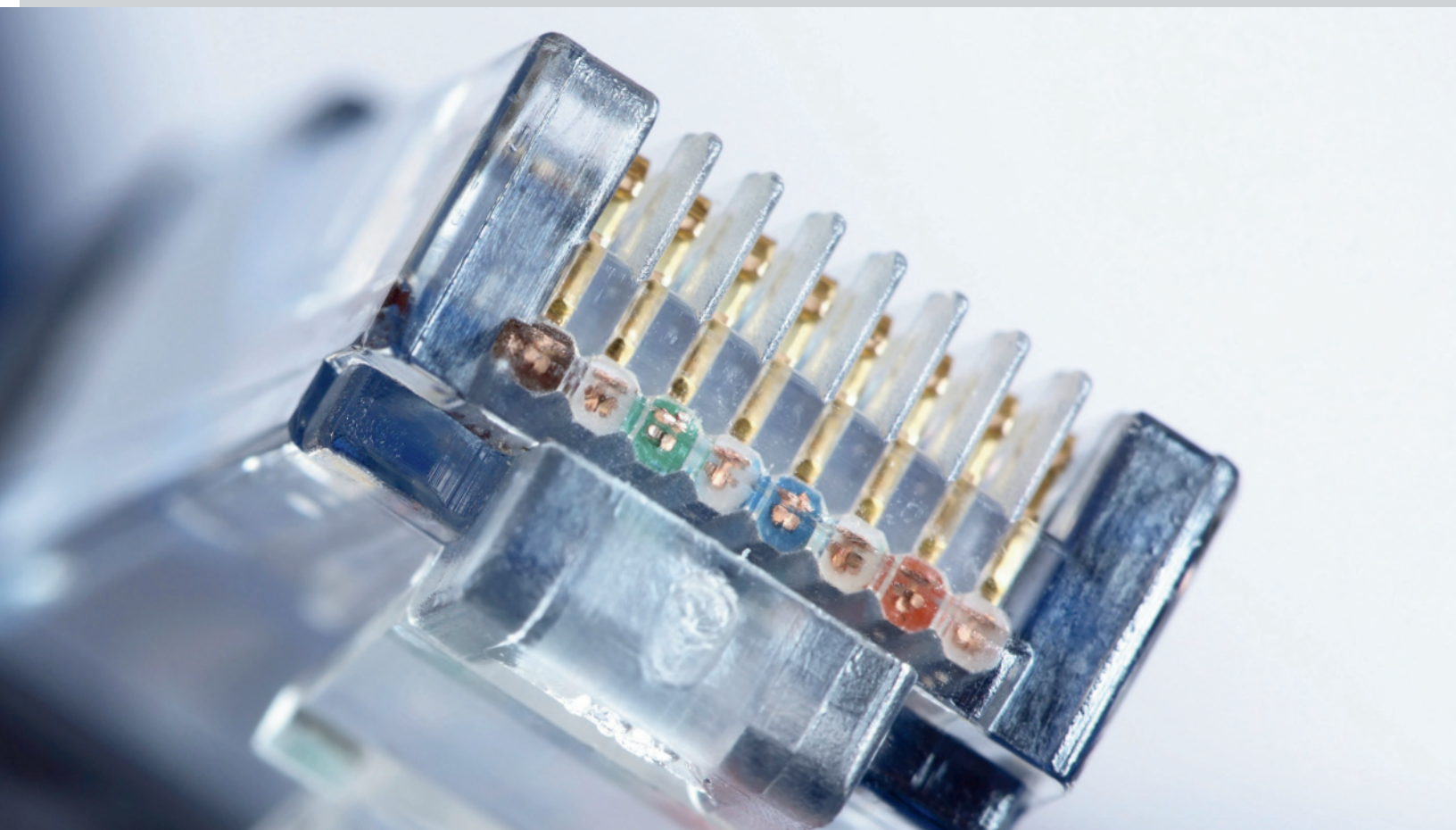




Allunga la distanza
dai tuoi competitor!

CCTV Ethernet industrial Switch
Catalogo Switch LongRange Pro





Con i nuovi Ethernet industrial Switch per la videosorveglianza di Mtechnology, superi i normali limiti del rame risparmiando tempo e denaro.

Dall'esperienza maturata in oltre 25 anni nella videosorveglianza nasce una gamma di prodotti specifici che consente di assicurare il funzionamento delle telecamere IP su lunghe distanze con i normali cavi in rame, rispettando i principali standard di rete.

Affidabilità in ogni condizione

Progettati con componenti industriali di alta qualità e dotati di protezioni avanzate contro fulmini e interferenze, i nostri switch e accessori garantiscono prestazioni eccellenti e una continuità operativa senza paragoni, anche negli ambienti più ostili.

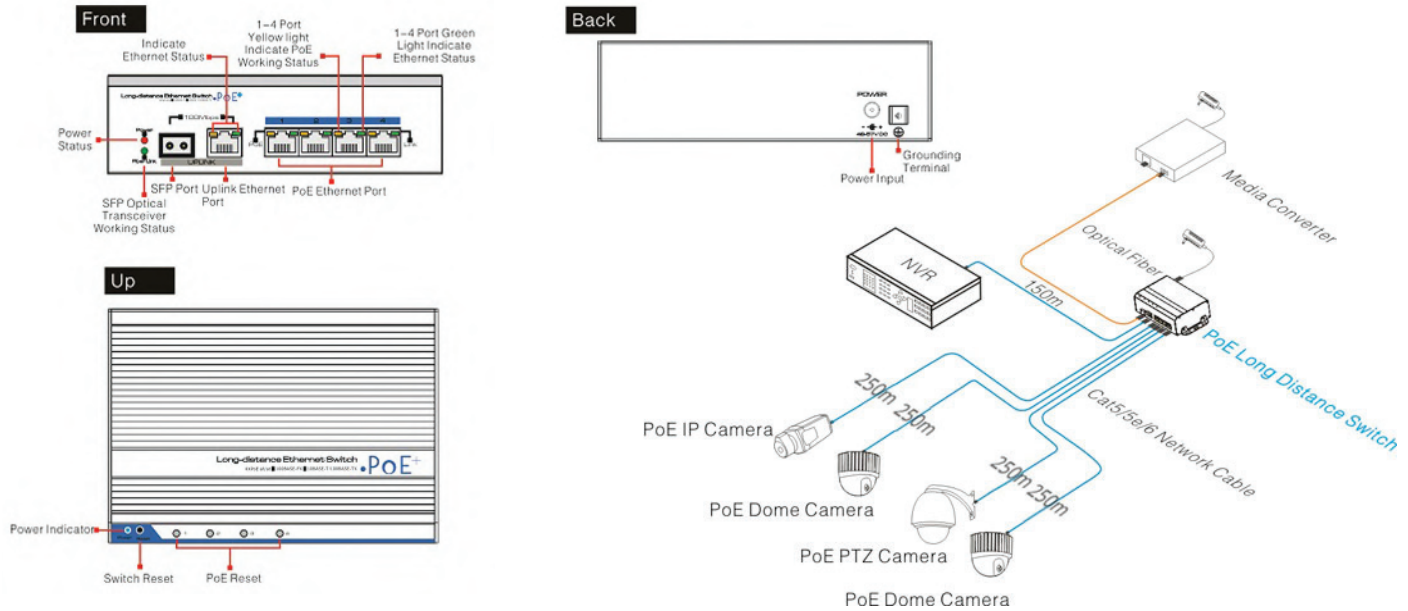
MT-TP7304POE

4 ports Ethernet PoE
Long Distance industrial Switch



FEATURES

- 4 porte 10/100Mbps PoE Ethernet a lunga distanza, 1 porta Uplink
- Standard IEEE802.3 af
- Tecnologia advanced network cable driver, distanza di trasmissione fino a 250m sulle porte Downlink e 150m sulla porta uplink
- Nessun rischio di danneggiare dispositivi non POE
- Porte PoE Ethernet IEEE802.3 AF forniscono 30W,ideali per telecamere con infrarossi.
- 2 porte uplink, 100Mbps ottica ed Ethernet
- Rispetta gli standard IEEE802.3 10BASE-T, IEEE802.3u 100BASE-TX/FX
- Connettore di alimentazione ridondante, per backup e facilitare l'installazione, adattatore 230V in dotazione.
- Case in robusto alluminio, con staffe din rail
- Fanless



Model	MT-TP7304POE
Downstream Ports	4* 10/100Base-TX
Uplink Ports	1*100Mbps SFP Port and 1*10/100Base-TX
Network Standard	IEEE802.3, IEEE802.3u, IEEE802.3 X
Switch Capacity	1.2Gbps
Throughput	0.9Mpps
Switch Processing Scheme	Store and Forward
Memory Buffer	512K
MAC Table	2K
PoE Standard	802.3af/at
PsE Type	End-span
Power Pin Assignment	1/2(+), 3/6(-)
PoE Power Output	44~57V DC , 30 watts max
PoE Budget	60 watts max
Lightning protection	6KV Execute: IEC61000-4-5
ESD	6KV Contact discharge 8KV Air discharge Execute: IEC61000-4-2
Power Supply	DC 48~57V
Power Dissipation	<5W
Work temperature	-40°C~75°C
Storage temperature	-40°C~85°C
Humidity(Non-condensin)	5%-95%
Dimension (L×W×H)	159mm×110mm×46mm
Weight	530g
Regulator	CE, FCC, ROHS

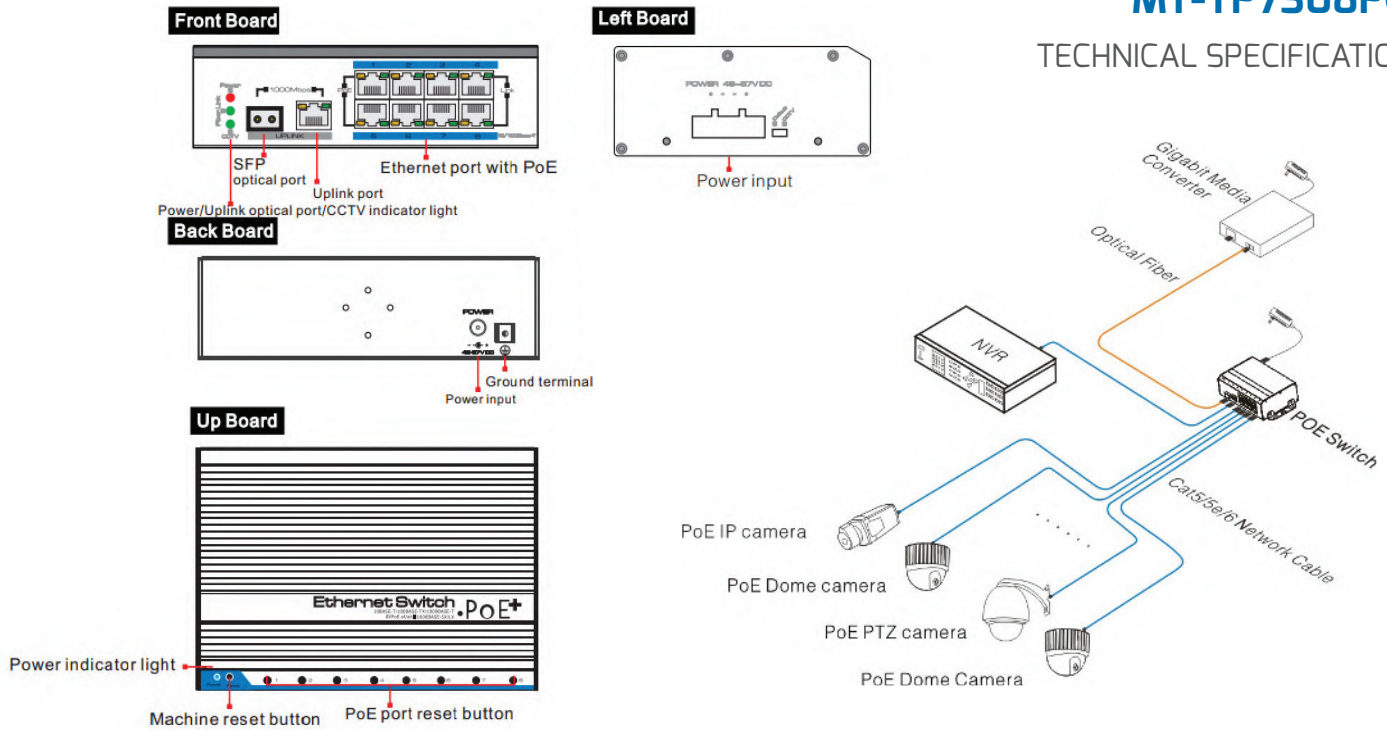
MT-TP7308POE

8 ports Ethernet PoE
Long Distance industrial Switch



FEATURES

- 8 porte 10/100Mbps PoE Ethernet a lunga distanza, 2 porte Uplink Gigabit fibra o rame
- Industrial-Level Chip e range di temperatura estesa
- Standard IEEE802.3 af
- Tecnologia advanced network cable driver, distanza di trasmissione fino a 250m sulle porte Downlink e 150m sulla porta uplink
- Nessun rischio di danneggiare dispositivi non POE
- Porte PoE Ethernet IEEE802.3 AF forniscono 30W, ideali per telecamere con infrarossi
- 2 porte uplink, 1.000Mbps ottica ed Ethernet
- Rispetta gli standard IEEE802.3 10BASE-T, IEEE802.3u 100BASE-TX/FX
- Connettore di alimentazione ridondante, per backup e facilitare l'installazione, adattatore 230V in dotazione
- Case in robusto alluminio, con staffe din rail



Model	MT-TP7308POE
Downstream Ports	8* 10/100Base-TX
Uplink Ports	1*1000Mbps SFP Port and 1*10/100/1000Base-T
Network Standard	IEEE802.3, IEEE802.3u, IEEE802.3ab, IEEE802.3z, IEEE802.3 X
Switch Capacity	5.6Gbps
Throughput	4Mpps
Switch Processing Scheme	Store and Forward
Memory Buffer	1M
MAC Table	8K
PoE Standard	802.3af/at
PsE Type	End-span
Power Pin Assignment	1/2(+), 3/6(-)
PoE Power Output	44~57V DC , 30 watts max
PoE Budge	150 watts max
Lightning protection	6KV Execute:IEC61000-4-5
ESD	6KV Contact discharge 8KV Air discharge Execute:IEC61000-4-2
Power Supply	DC 48~57V
Power Dissipation	<6W
Work temperature	-40°C~75°C
Storage temperature	-40°C~85°C
Humidity(Non-condensin)	5%-95%
Dimension (L×W×H)	159mm×110mm×46mm
Weight	530g
Regulator	CE, FCC, ROHS

M-TP73G04POE

4 ports Gigabit PoE
Long Distance industrial Switch



FEATURES

Trasmissione dati e alimentazione PoE fino a 250 metri di distanza

Standard IEEE802.3 af

Alimentazione flessibile 12~57V DC con doppio ingresso ridondante e contatto di allarme

Rispetta gli standard IEEE802.3 10BASE-T, IEEE802.3u 100BASE-TX/FX

4 porte PoE++ Gigabit 10/100/1000Mbps con supporto fino a 90W per porta (360W totali)

Case in robusto alluminio, con staffe din rail

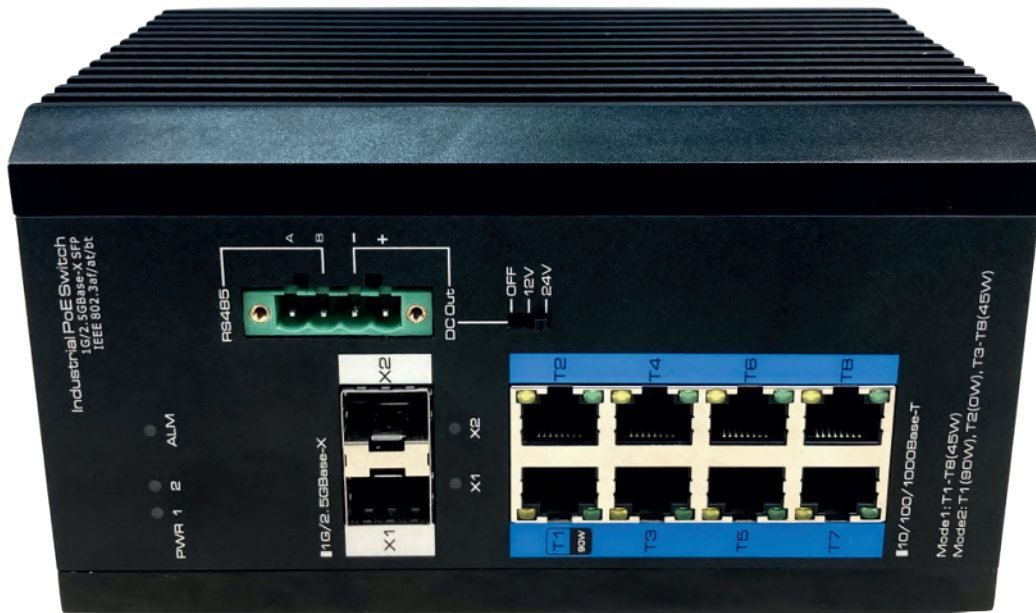
Fanless

Hardware Specifications	Downlink Port	4*10/100/1000BASE-T PoE++ RJ-45(Auto-MDI/MDI-X)
	Uplink Port	1*10/100/1000BASE-T RJ-45 1*1000BASE-X SFP
	Management Port	1*Relay
	DIP Switch	CCTV mode: the transmission distance is extended up to 250m, the rate is limited to 10Mbps
	LED Indicators	2*PWR, power indicators
		1*SFP port indicator
		1*ALM, alarm indicator
	Dimensions (W*D*H)	160mm*110mm*44mm
	Net Weight	0.74kg
	Input Voltage	Support redundant power supply, Power 1 (Main): 12~57V DC, Power 2 (Backup): 12~57V DC
	Power Consumption	≤250W (Full load including PoE)
Material	Metal shell	
Installation	DIN-rail/Desktop/Wall mounted	
Switch Property	Standards	IEEE 802.3, IEEE 802.3u, IEEE 802.3ab, IEEE 802.3z, IEEE 802.3x, IEEE 802.1D, IEEE 802.3af, IEEE 802.3at, IEEE 802.3bt
	Forwarding Modes	Store and forward
	MAC Table	2k, support auto learning
	Switching Capacity	12Gbps/non-blocking
	Packet Forwarding Rate	8.928Mpps
	Port Buffer	1MB
	Jumbo Frame	9716 Bytes

Power Supply	PoE Standard	IEEE 802.3af/at/bt
	PoE Power Supply Type	End-span
	PoE Pin Assignment	3/6/4/5(+),1/2/7/8(-)
	PoE Budget	90W max for each port 240W@48V, 120W@24V, 60W@12V max for whole switch
Alarm Signal Output by Relay	Support relay alarm for power off	
Reliability	ESD	IEC61000-4-2, Level 3: Contact Discharge: ±6kV, Air Discharge: ±8kV
	Surge	IEC61000-4-5, line to earth:
	Operating	6kV -20°C~65°C, 5%~95% (Non-condensation)
	Storage	-40°C~85°C, 5%~95% (Non-condensation)
Certifications	CE, FCC	

MT-TP73G10POE

8 ports Gigabit PoE
Long Distance industrial Switch



FEATURES

8 porte Gigabit PoE++ con supporto fino a 90W per porta e standard IEEE802.3af/at

Industrial-Level Chip e range di temperatura estesa

Standard IEEE802.3 af

Tecnologia avanzata di driver di rete per estendere il segnale Ethernet fino a 200m con cavo Cat5e/6

Alimentazione flessibile 12~57V DC con doppio ingresso ridondante e contatto di allarme

Gestione avanzata L2 con supporto di VLAN, QoS, SNMP e Fast-Ring

Case in robusto alluminio, con staffe din rail

Hardware Specifications	Ethernet Ports	8*10/100/1000BASE-T PoE RJ-45(Auto-MDI/MDI-X)	
		2*1G/2.5GBASE-X SFP (The default value is 1G)	
	Management Port	1*RJ-45 Console 1*Relay	
	Serial Port	1*RS-485	
		RS-485 signal: A, B Check bit: None, Even, Odd, Space, Mark Data bit: 5, 6, 7, 8bit Stop bit: 1, 1.5, 2bit Baud rate: 300~115200bps Load capacity: RS-485 port supports 32-point polling environment (128-point could be customized) Direction control: RS-485 adopts automatic data flow control technology	
	USB Port	USB3.0	
	Auxiliary DC Output	OFF/12V/24V@2A max	
	Init Button	Long press >5s to initialize the system	
	LED Indicators	2*PWR, power indicators	
		1*ALM, alarm indicator	
		2*SFP port indicators	
	Dimensions (W*D*H)	163mm*110mm*95.1mm	
	Net Weight	1.72kg	
	Input Voltage	Support redundant power supply, Power 1 (Main): 12~57V DC, Power 2 (Backup): 12~57V DC	
	Power Consumption	≤250W (Full load including PoE & auxiliary DC)	
	Installation	DIN-rail/Desktop/Wall mounted	
	Material	Metal shell	
	Switch Property	Forwarding Modes	Store and Forward
		Switching Capacity	26Gbps / non-blocking
		Packet Forwarding Rate	19.344Mpps
MAC Table		16k, support auto learning	
Port Buffer		2MB	
Jumbo Frame		9kB	

Power Supply	PoE Standard	IEEE 802.3af/at/bt
	PoE Power Supply Type	End-span
	PoE Pin Assignment	1/2(+),3/6(-) or 3/6/4/5(+), 1/2/7/8(-)
	PoE Budget	Mode1: 45W max for each port Mode2: 90W max for port 1, 45W max for ports 3 to 8 each. 240W@48V, 120W@24V, 60W@12V max for whole switch (Including auxiliary DC output)
Reliability	ESD	IEC61000-4-2, Level 3: Contact Discharge: ±6kV, Air Discharge: ±8kV
	Surge	IEC61000-4-5, Data Port: ±6kV
	Operating	-40°C ~75°C, 5%~95% (Non-condensation)
	Storage	-40°C ~85°C, 5%~95% (Non-condensation)
Certifications	CE, FCC	

MT-TP7224E-POE

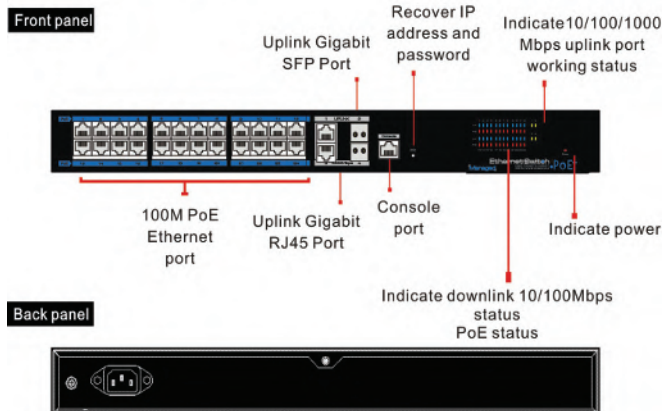
24 Ports Managed
Ethernet PoE Long Distance industrial Switch



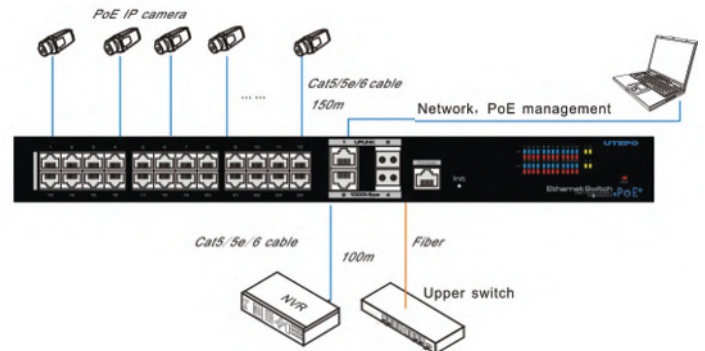
FEATURES

- 24 porte 10/100Mbps PoE Ethernet a lunga distanza, 2 porte Uplink Ethernet 1000Mbps e 2 porte 1000Mbps ottiche
- Management Layer 2
- Standard IEEE802.3 af/at
- Tecnologia advanced network cable driver, distanza di trasmissione fino a 150m o 200m programmabili
- Nessun rischio di danneggiare dispositivi non POE
- Porte PoE Ethernet IEEE802.3 AF forniscono 30W, ideali anche per telecamere con infrarossi ad alto consumo, totale di 380W
- Rispetta gli standard IEEE802.3 10BASE-T, IEEE802.3u 100BASE-TX, IEEE802.3ab 1000BASE-T, IEEE802.3z 1000BASE-SX\LX
- Montaggio a rack su frontale o retro

24 Ports Managed PoE Ethernet Switch Board Diagram



Application



Model	MT-TP7224E-POE
Downstream Ports	24* 10/100Base-TX (PoE)
Uplink Ports	2*1000Mbps SFP Port and 2*10/100/1000Base-T
Network Standard	IEEE802.3, IEEE802.3u, IEEE802.3ab, IEEE802.3z, IEEE802.3X, IEEE 802.1Q, IEEE 802.1p, IEEE 802.3ad, IEEE 802.1D, IEEE 802.1X
Switch Capacity	12.8Gbps
Throughput	9.52Mpps
Switch Processing Scheme	Store and Forward
Memory Buffer	12M
MAC Table	16K
PoE Standard	802.3af/at
PsE Type	End-span
Power Pin Assignment	1/2(+), 3/6(-)
PoE Power Output	54V DC , 30 watts max
PoE Budge	390 watts max
Lightning protection	6KV Execute:IEC61000-4-5
ESD	6KV Contact discharge 8KV Air discharge Execute: IEC61000-4-2
Power Supply	100~240V AC; 50/60Hz
Power Dissipation	<420W(Including PoE)
Work temperature	-10°C~50°C
Storage temperature	-40°C~85°C
Humidity(Non-condensin)	5%-95%
Dimension (L×W×H)	442mm×255mm×44.5mm
Weight	3.73kg
Regulator	CE, FCC, ROHS

MT-TP73EPOC

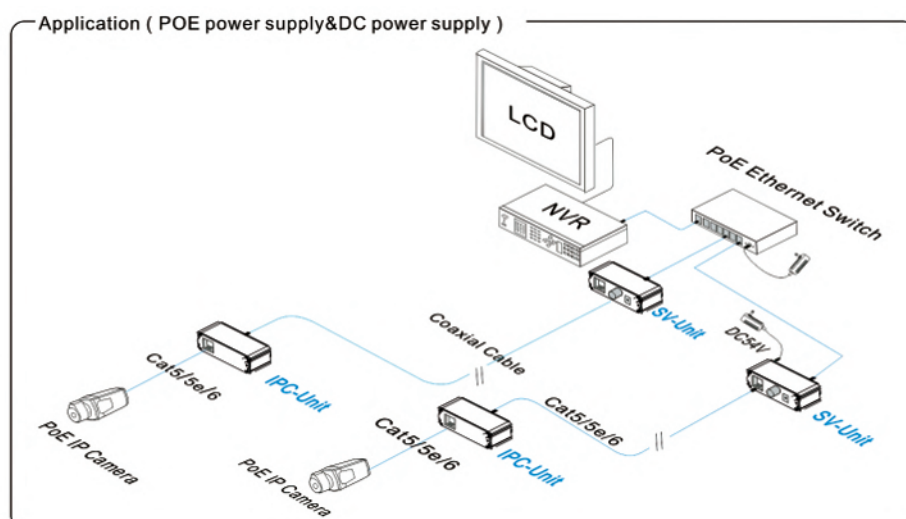
CCTV Ethernet Extender



FEATURES

Questo extender Ethernet è composto da una SV-Unit e un IPC-Unit. Può trasferire il segnale Ethernet e POE fino a 500m con un normale cavo coassiale e fino a 400m con un cavo cat5/6 in modo sincrono. L'alimentazione può avvenire direttamente dal sistema POE o con alimentazione esterna 48V~57V sul modulo SV-unit, il modulo IPC non richiede ulteriori fonti di alimentazione così come la telecamera ad esso collegato.

- Installazione plug and play non richiede nessun settaggio
- Permette di recuperare i vecchi cablaggi
- Bassa latenza inferiore a 1ms
- Rispetta gli standard IEEE802.3 10BASE-T, IEEE802.3u 100BASE-TX, IEEE802.3af/at
- Eccellente protezione da interferenze e scariche elettriche



Model		MT-TP73EPOC
Power	Power Supply	PoE Power Supply or Power Adapter Supply
	Voltage Range	DC48V~57V
	Power Consumption	<2W
Ethernet PortParameter	Ethernet Port	EPOC: 0--100Mbps Ethernet: 10/100Mbps Transmission Bandwidth Changes with Transmission Distance, Please Refer to Table 1
	Transmission Distance	EPOC Coaxial Cable: 0-500m EPOC Network Cable: 0-400m
	Transmission Medium	RG59 Coaxial Cable and Cat5e/6
	PoE Agreement	Support IEEE802.3af, IEEE802.3at
	PoE Power Supply	Support End-span and Mid-span
Ethernet Exchange	Ethernet Standard	IEEE802.3 10BASE-T, IEEE802.3u 100BASE-TX/FX
	Ethernet Delay	<1ms
Status	Indicator LED	PoE IN/OUT Port: One indicates PoE power supply or DC power status(RJ45 yellow), one indicates Ethernet signal transmission(RJ45 green); EPOC Port: indicates signal transmission(RJ45 yellow/green)
Protection	ESD	1a Contact Discharge level 3 1b Air Discharge level 3 Per: IEC61000-4-2
	Communicating Port Anti-thunder Protection	Per: IEC61000-4-5 level 3
Environmental	Working temperature	0°C~+55°C
	Storage temperature	-40°C~+85°C
	Humidity (non-condensing)	0-95%
Mechanical	Dimension (L×W×H)	63.2mm×82mm×25mm
	Material	Aluminum
	Color	Black
	Weight	IPC:153g; SV:154g
Stability	MTBF	>30000h

Power Supply		PoE Ethernet Power Supply		54V DC Power Supply	
SV <-> IPC Cable		75-5	CAT5E	75-5	CAT5E
100m	Bandwidth (Mbps)	54.5	67	54.5	67
	Load Capacity (W)	16.1	17.2	23	23
200m	Bandwidth (Mbps)	54.4	53.1	54.4	53.1
	Load Capacity (W)	10	12	17	22
300m	Bandwidth (Mbps)	54.3	52.4	54.3	52.4
	Load Capacity (W)	8	9.1	12	16
400m	Bandwidth (Mbps)	54.2	48.3	54.2	48.3
	Load Capacity (W)	5	6.5	10	12
500m	Bandwidth (Mbps)	53.5	/	53.5	/
	Load Capacity (W)	4.5	/	8	/

MT-TP7201ER-POE

POE Ethernet Repeater



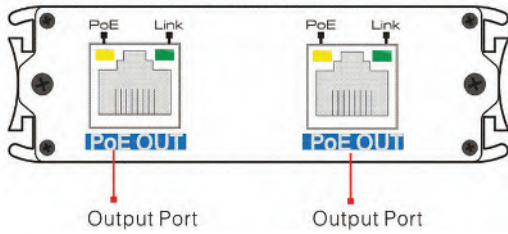
FEATURES

- Repeater che permette di estendere fino a 300m il segnale ethernet e Poe senza bisogno di ulteriore alimentazione
- 3x 10/100Mbps porte Ethernet, una porta Poe input e due porte POE output
- Rispetta gli standard IEEE802.3 10BASE-T, IEEE802.3u 100BASE-TX, IEEE802.3af/at
- Eccellente protezione da scariche e interferenze
- Installazione plug and play non richiede nessun settaggio

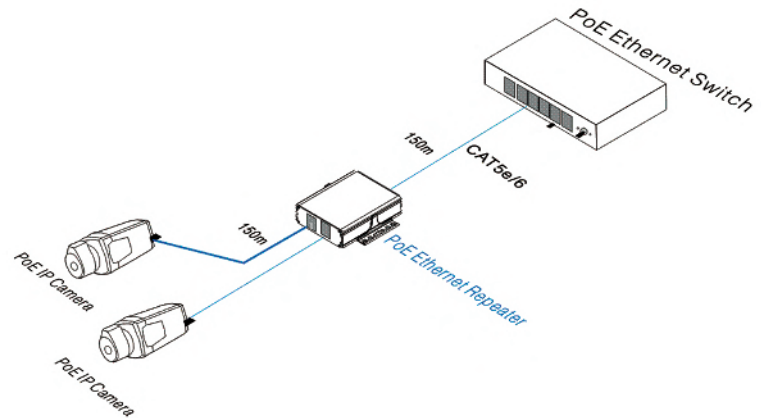
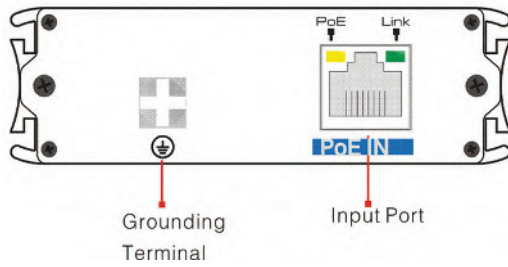
MT-TP7201ER-POE

TECHNICAL SPECIFICATIONS

Right side



Left side



Model		MT-TP7201ER-POE
Power	Power Supply	PoE Power Supply
	Consumption	<3W
Ethernet Port	Ethernet Port	PoE IN Port:10/100Mbps, PoE Input Port PoE OUT Port:10/100Mbps, PoE Output Port
	Transmission Distance	150m(About the relationship between distance and power, Please refer to table 1)
	Transmission Medium	Cat5e/6
	PoE Protocol	Support IEEE802.3af, IEEE802.3at Protocol
	PoE Mode	Compatible with End-span and Mid-span
Network Switch	Network Standard	IEEE802.3 10BASE-T, IEEE802.3u 100BASE-TX
	Network Delay	<20us
LED Status Indicator	LED	PoE IN Port and PoE OUT Port: RJ45 yellow light indicates PoE status; green light indicates data exchange
Protection	ESD	1a Contact Discharge Leve 3 1b Air Discharge Level 3 Per: IEC61000-4-2
	Communication port Lightning protection	Per: IEC61000-4-5 Level 3
Environmental	Working Temperature	-40°C~+75°C
	Storage Temperature	-40°C~+85°C
	Humidity (non-condensing)	0-95%
Mechanical	Dimension (L×W×H)	103mm×82mm×25mm
	Material	Aluminum
	Color	Black
	Weight	195g
Stability	MTBF	>30000h

MTECHNOLOGY

www.mtechnology.it
info@mtechnology.it

DISTRIBUITO DA:

Mtechnology è un marchio registrato.
Tutti gli altri marchi citati appartengono ai legittimi proprietari.
L'aspetto esteriore e le caratteristiche tecniche
possono essere modificati in qualunque momento