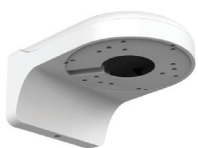




FEATURES

- 5MP, 1/3" CMOS image sensor, low illuminance, high image definition
- Realtime. 2688 × 1520@30 fps
- H.265 codec, high compression rate, low bit rate
- Built-in IR LED, max. IR distance: 50 m
- ROI, SMART H.264+/H.265+, flexible coding, applicable to various bandwidth and storage environments
- Rotation mode, WDR, 3D DNR, HLC, BLC, digital watermarking, applicable to various monitoring scenes
- Intelligent detection: Intrusion, tripwire (support the classification and accurate detection of vehicle and human)
- Abnormality detection: Motion detection, video tampering, scene changing, audio abnormality detection, no SD card, SD card full, SD card error, network disconnection, IP conflict, illegal access, voltage detection
- Alarm: In, out; Audio: In, out; Supports max. 256 G Micro SD card
- 12V DC/POE power supply
- IP67, IK10 protection
- Ai



Accessories:

FB200
wall mount bracket



Accessories:

DT-FA136
junction box



Accessories:

DT-MFA152
pole mount

MT-IPDW250AI

TECHNICAL SPECIFICATIONS

Camera	Image Sensor	1/3" Megapixel progressive CMOS		
	Max. Resolution	2688 (H) × 1520 (V)		
	ROM	128 MB		
	RAM	512 MB		
	Scanning System	Progressive		
	Electronic Shutter Speed	Auto/Manual 1/3 s–1/100000 s		
	Min. Illumination	0.005 Lux@F1.6 (Color, 30IRE) 0.0005 Lux@F1.6 (B/W, 30IRE) 0 Lux (Illuminator on)		
	S/N Ratio	> 56 dB		
	Illumination Distance	50 m (164.0 ft)		
	Illuminator On/Off Control	Auto / Manual		
	Illuminator Number	3 (IR LED)		
	Pan/Tilt/Rotation Range	Pan: 0°–355°; Tilt: 0°–65°; Rotation: 0°–355°		
	Lens	Lens Type	Fixed-focal	
Mount Type		M12		
Focal Length		2.8 mm		
Max Aperture		F1.6		
Field of View		Horizontal: 103°; vertical: 55°; diagonal: 122°		
Iris Type		Fixed		
Close Focus Distance		0.9 m (3.0 ft)		
DORI Distance		Lens	2.8mm	
		Detect	56.0 m (183.7 ft)	
		Observe	22.4 m (73.5 ft)	
	Recognize	11.2 m (36.8 ft)		
	Identify	5.6 m (18.4 ft)		
Professional, Intelligent	Perimeter Protection	Tripwire; intrusion (Recognition of human and vehicle)		
	Intelligent Search	Work together with Smart NVR to perform refine intelligent search, event extraction and merging to event videos		
Video	Compression	H.265; H.264; H.264H; H.264B; MJPEG (only supported by sub stream)		
	Smart Codec	Smart H.265+ / Smart H.264+		
	Video Frame Rate	Main stream (2688 × 1520@1–25/30 fps)		
		sub stream (704 × 576@1–25 fps/704 × 480@1–30 fps)		
		third stream (1280 × 720@1–25/30 fps)		
	Stream Capability	3 streams		
	Resolution	2688×1520; 3M (2304×1296); 1080p (1920×1080); 1.3M (1280×960); 720p (1280×720); D1 (704×576/704×480); VGA (640×480); CIF (352×288/352×240)		
	Bit Rate Control	CBR/VBR		
	Video Bit Rate	H.264: 3 Kbps–8192 Kbps H.265: 3 Kbps–8192 Kbps		
	Day/Night	Auto(ICR)/Color/B/W		
	BLC	yes		
	HLC	yes		
	WDR	120 dB		

Video	White Balance	Auto/natural/street lamp/outdoor/manual/regional custom		
	Gain Control	Auto/Manual		
	Noise Reduction	3D DNR		
	Motion Detetion	OFF/ON (4 areas, rectangular)		
	Region of Interest (RoI)	Yes (4 areas)		
	Smart Illumination	Yes		
	Image Rotation	0°/90°/180°/270° (Support 90°/270° with 1920 × 1080 resolution and lower.)		
	Mirror	Yes		
	Privacy Masking	4 areas		
Audio	Audio Compression	G.711a; G.711Mu; G726		
Alarm Event	No SD card; SD card full; SD card error; less service time of SD card (smart card supports); network disconnection; IP conflict; illegal access; voltage detection; security exception; motion detection; scene changing; intensity change; tripwire; intrusion; SMD			
Network	Network	RJ-45 (10/100Base-T)		
	SDK and API	Yes		
	Protocol	IPv4; IPv6; HTTP; TCP; UDP; ARP; RTP; RTSP; RTCP; RTMP; SMTP; FTP; SFTP; DHCP; DNS; DDNS; QoS; UPnP; NTP; Multicast; ICMP; IGMP; NFS; PPPoE; SNMP		
	Cyber Security	Video encryption; firmware encryption; configuration encryption; Digest; WSSE; account lockout; security logs; IP/MAC filtering; generation and importing of X.509 certification; syslog; HTTPS; 802.1x; trusted boot; trusted execution; trusted upgrade		
	Interoperability	ONVIF(Profile S/Profile G/Profile T); CGI; P2P; Milestone; Genetec		
	Scene Self-adaptation (SSA)	Yes		
	User/Host	20 (Total bandwidth: 64 M)		
	Storage	FTP; SFTP; Micro SD Card (support max. 256 G); NAS		
	Browser	IE: IE8, IE9, IE11 Chrome Firefox		
	Management Software	Smart PSS, DSS, DMSS		
	Mobile Phone	IOS, Android		
	Certifications	CE-LVD: EN62368-1 CE-EMC: Electromagnetic Compatibility Directive 2014/30/EU FCC: 47 CFR FCC Part 15, Subpart B UL/CUL: UL60950-1 CAN/CSA C22.2 No.60950-1-07		
	Port	Audio Input	1-channel (RCA port)	
Audio Output		1-channel (RCA port)		
Alarm Input		1 channel in: 5mA 3V–5V DC		
Alarm Output		1 channel out: 300mA 12V DC		
Power	Power Supply	12V DC/PoE (802.3af)		
	Power Consumption	<7.3W		
Environment	Operating Conditions	-40°C to +60°C (-40°F to +140°F)/ less than 95%		
	Storage Conditions	-40°C to +60°C (-40°F to +140°F)		
	Protection Grade	IP67; IK10		
Structure	Casing	Metal		
	Dimensions	81 mm × Φ109.9 mm (3.2" × Φ4.3")		
	Net Weight	378 g (0.8 lb)		
	Gross Weight	523 g (1.2 lb)		

Datasheet rev.A21.5